

# Landscape Architecture



2007  
No.2

國內統一刊號: CN11-5366/S  
國際標準刊號: ISSN1673-1530

# 風景園林

**人·城市·自然**——深圳市创建国家生态园林城市心得 吕锐锋

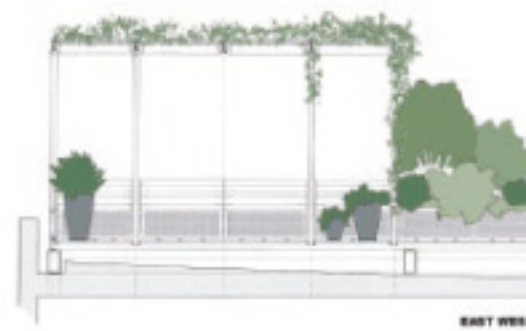
Human City Nature

About the Construction of National Ecological Garden City In Shenzhen by Lv Rui-feng

**2007 美國风景園林師協會專業獎專題**

Feature on ASLA 2007 Professional Awards





Location: New York, New York

Design Firm: Sawyer/Berson Architecture & Landscape Architecture, LLP, New York, New York

项目地点: 美国纽约

设计单位: 美国纽约索亚/百森建筑和景观事务所

住宅设计-荣誉奖 RESIDENTIAL DESIGN HONOR AWARD

## 曼哈顿岛屋顶露台

# MANHATTAN ROOF TERRACE

"Beautifully resolved. It's simple, clean, and calm, but with an effective profusion of plants. The details and furnishings are fabulous. It looks like it would be well-used and much appreciated."

2007 Professional Awards Jury Comments

2007年ASLA专业奖评委评语:

"设计非常精美,它虽然简约,干净和宁静,但那里茂盛的植物呈现一派生机。细节和家具设施令人惊叹。它必将受到人们的喜欢,并为人们所享用。"

Project Statement

To create the setting for this 1,428 square foot roof terrace, an existing postmodern roof pavilion was demolished to make way for a modern architectural

framework inspired by the works of American architect Paul Rudolph, and French architects Jean Prouvé and Pierre Chareau. A steel-framed platform was installed, onto which a program of garden elements were placed: a fountain, pergola and planters, as well as an outdoor kitchen and shower.

项目简介:

为建造这个1428平方英尺的屋顶露台,原有的后现代屋顶亭台被拆除。整个建筑框架的设计灵感来自于美国建筑师保罗·卢道夫和法国建筑师琼·普鲁夫和皮亚·查理奥的作品。露台上还设置了很多景观元素,如喷泉、藤架、花盆和户外厨房和浴室等。

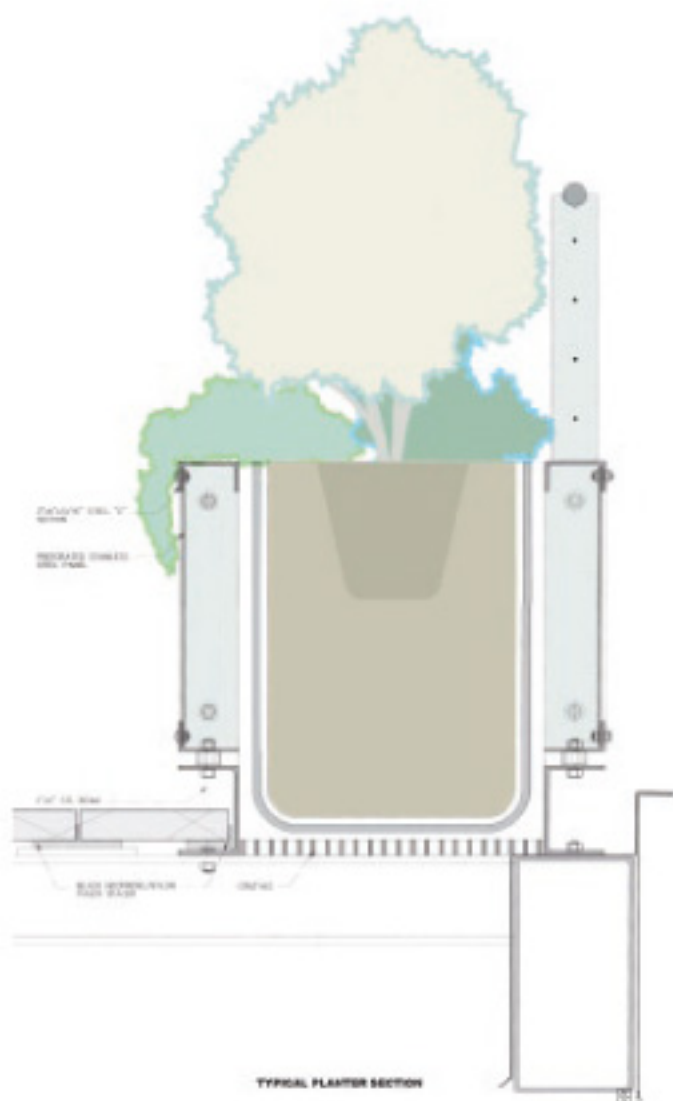


T SECTION LOOKING NORTH



T SECTION LOOKING SOUTH

图2



TYPICAL PLANTER SECTION



图4

图说:

D1 Plan of roof terrace. (Photo: Sawyer/Berson, ASLA Award Recipient)

图1 屋顶露台的平面图 (图片来源: 索亚/百森事务所, ASLA获奖作品)

D2 Two sections of the roof terrace. (Photo: Sawyer/Berson, ASLA Award Recipient)

图2 屋顶露台的两个截面图。(图片来源: 索亚/百森事务所, ASLA获奖作品)

D3 Typical planter and rail section. (Photo: Sawyer/Berson, ASLA Award Recipient)

图3 典型的花盆和围栏截面(图片来源: 索亚/百森事务所, ASLA获奖作品)

D4 Contextual aerial view of the roof terrace project from the neighboring high-rise apartment building looking north. (Photo: Dana Gallagher, ASLA Award Recipient)

图4 从周围朝北的高层公寓上的俯瞰屋顶露台。(图片来源: 丹娜·伽拉格, ASLA获奖作品)

D5 Western view of the terrace lounge. (Photo: Dana Gallagher, ASLA Award Recipient)

图5 露台沙发休闲区的西边景色。(图片来源: 丹娜·伽拉格, ASLA获奖作品)

D6 View of the pergola and dining area with the eastern Manhattan skyline beyond. (Photo: Dana Gallagher, ASLA Award Recipient)

图6 藤架和餐厅, 以及东部曼哈顿矗立空中的建筑物外景。(图片来源: 丹娜·伽拉格, ASLA获奖作品)

D7 Detail of the marble and glass mosaic fountain, and the railing to the top right. (Photo: Bill Cunningham, ASLA Award Recipient)

图7 用大理石和玻璃镶嵌成的喷泉池和右边的围栏 (图片来源: 比尔·坎宁安, ASLA 获奖作品)

D8 Close-up view of the plantings and furnishings adjacent to the pergola and the enclosed shower. (Photo: Dana Gallagher, ASLA Award Recipient)

图8 藤架和浴室旁边的植物和家具近景 (图片来源: 丹娜·伽拉格, ASLA获奖作品)



005



006



007



008